

# Demodex Mites

## The Factor of Female Pattern Baldness

Have you experienced, itching of the scalp? Twitching of the eyelids? Crawling sensation on the scalp and face? Or perhaps, noticed that you've lost more hair than usual?

If you've answered "YES" to the above questions, you might be suffering from female pattern baldness or Demodex mites in your hair.

Tell tale signs of female pattern baldness include an overall thinning of hair on the crown of the head, with the frontal hairline maintained.

Demodex Mites are invisible to the naked eye, measuring only 100-300 microns in length and can only be found under a microscope. Demodex follicle mites live inside the sebaceous glands and hair follicles and damaging the cell walls.

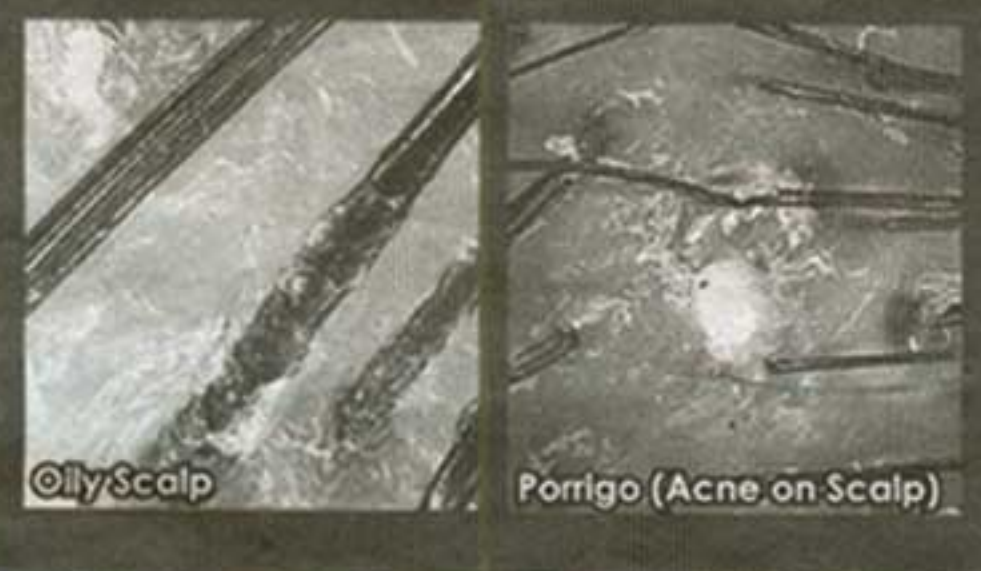
### 10 Common Scalp Conditions Affected By Demodex Mites

- Scalp Inflammation
- Acne On Scalp
- Sensitive Scalp
- Itchy Scalp
- Drastic Hair Loss
- Congested Pores
- Oily Scalp
- Excessive Oil Secretion
- Shorten Hair Growth Phase
- Weaken Hair Root



Nurul Norasyikin, Age 27  
Female Pattern Baldness

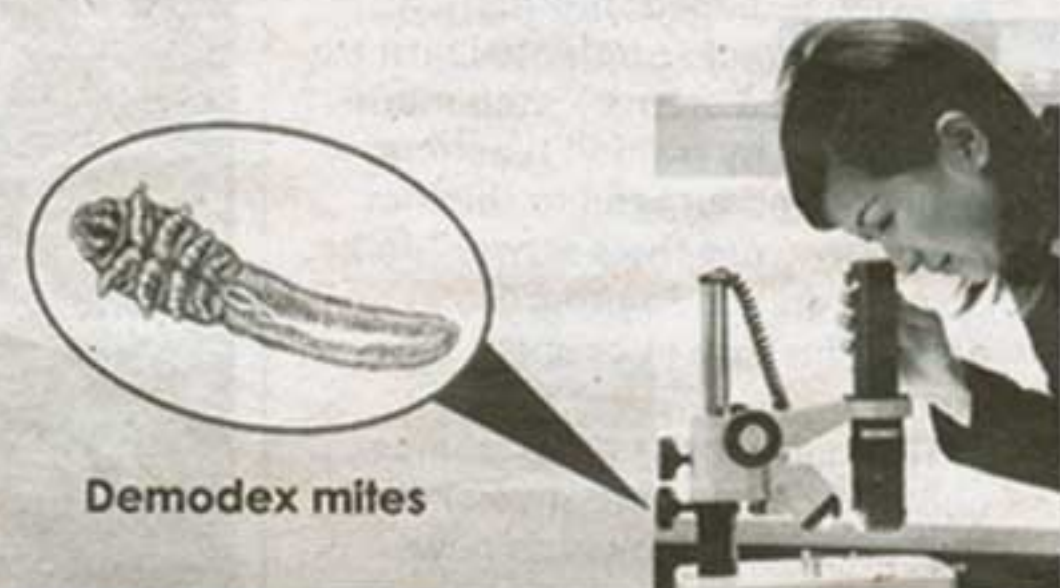
“ My hair loss problem was solved by 101 HAIR CARE. With 101 solutions, my dandruff problem had gone as well, my hair was now thicker and much easier to manage. ”



### 101 Professional Advice:

**Demodex Solution Technology (DST™)**  
The New Breakthrough Technology & Proven Solution that targets Demodex Mites and hair thinning problem

Proven results show that Demodex Solution Technology (DST™) can effectively enhance hair growth and improve hair thinning problem. It combined with Ozone to suppress and remove Demodex Mites on the scalp. It incorporates Far Infra Red Energy to improve blood circulation and also helps to soften dead cells and clogged pores, neutralize poisons and remove undesirable odors.



# Are there mites in your hair?

**H**AVE you experienced itching of the scalp? Twitching of the eyelids? Crawling sensation on the scalp and face? Or perhaps, noticed that you've lost more hair than usual?

If you've answered yes to the above questions, you might be suffering from female pattern hair thinning or Demodex mites in your hair.

Tell-tale signs of female pattern hair thinning include an overall thinning of hair on the crown of the head, with the frontal hairline maintained. One can expect moderate loss of hair, though it rarely progresses to total or near hair thinning like in men.

Unlike men who often have an obvious bald spot, female pattern thinning is not as easily recognisable. It cannot be ascertained whether it is a temporary setback because of hormonal changes during pregnancy, illnesses, and stress, or whether it is a long-term condition.

As for those who have experienced itching, a crawling sensation on the scalp and face (though most of the time there are no signs of this), as well as extensive hair thinning, you may have Demodex mites in your hair.

Demodex mites are invisible to the naked eye, measuring only 100-300 microns in length. Demodex follicle mites live inside the sebaceous glands and hair follicles, sucking nutrients from the hair roots and damaging the cell walls.

After mating, the mites burrow into the skin and lay eggs. Throughout the five phases of their life cycle, these mites destroy the skin by excreting wastes and secretions, laying eggs and dying within its layers.

The presence of Demodex mites has also been associated with inflammation, which is believed to also shorten hair's life cycle and is linked to serious hair loss problem.

Obvious signs of Demodex mites

include itching, a crawling sensation on the scalp, face (though most of the time, there are no signs of this), as well as extensive hair loss. Other causes also include hormones called dihydrotestosterone (DHT) in the hair follicles.

To counter this problem, 101 Hair Care – a world renowned brand with more than 10 international awards using 100% natural herbs ingredients, has launched a new breakthrough technology and solution that specifically targets Demodex mites and hair loss problem.

Demodex Solution Technology (DST) is a therapy that is effective and non-invasive. Combined with a specialised ozone therapy to kill the parasite in the hair and scalp, this allows much needed oxygen for the hair follicle to resume its growth cycle.

■ Call them at 1300-888-101 to make your appointment for a Demodex follicle mite analysis and free consultation. Alternatively, visit them at any of their 14 outlets located nationwide.

• KL: Berjaya Times Square (03-2144 8101), Mid Valley City (03-2282 8101), Wangsa Maju (03-4149 7101)

• Selangor: USJ 9, Subang Jaya (03-8024 9101), Damansara Utama (03-7710 9101), Bukit Tinggi, Klang (03-3326 3601), The Mines Shopping Fair, Seri Kembangan (03-8942 8101)

• Penang: Queensbay Mall, Penang (04-643 9101), Autocity, Prai (04-508 8101)

• Johor: Taman Johor Jaya (07-355 6101), Plaza Pelangi (07-335 6101), Batu Pahat Mall (07-438 8101)

• Kedah: Legenda Heights, Sungai Petani (04-423 9101)

• Kuantan: Putra Square, Kuantan (09-517 3182)

You can also find out more by visiting [www.101hair.com.my](http://www.101hair.com.my).



**101 HAIR CARE™**  
Since 1974



Care Line 1-300-888-101 | Website [www.101hair.com.my](http://www.101hair.com.my)

Exclusively For **FIRST TRIAL** Hair Problem Customer

**FREE** 1 Visit  
4 x Suprises

101 <space> ST,  
Preferred Outlet,  
Name, IC. No.

Send to  
**32828**

**Kuala Lumpur** Berjaya Times Square (BTS) | Mid Valley City (MV) | Wangsa Maju (WM)  
**Selangor** Petaling Jaya (DU) | Subang Jaya (USJ) | Klang (KLG) | The Mines (TM)  
**Penang** Queensbay Mall (QB) | Autocity (AC) **Kedah** Legenda Heights (SP)  
**Pahang** Putra Square (KTN) **Johor** Plaza Pelangi (JB) | Taman Johor Jaya (JJ) | Batu Pahat (BP)

Operation Hours: Monday ~ Friday 11am ~ 8pm, Saturday 10am ~ 7pm, Sunday 10am ~ 4pm

Terms and conditions apply. A charge of RM2 applies for each SMS. 0% interest instalment plan available with selected major credit cards. 101 Hair Weaving Customer. Results may vary.